



Møre og Romsdal  
fylkeskommune

-Ein tydeleg  
medspelar

# Eco-Lighthouse Management System

Stephen Oommen- Environmental Advisor



Co-funded by the Intelligent Energy Europe  
Programme of the European Union

Beyond Energy Action Strategies



# Eco-lighthouse

- Eco-Lighthouse is Norway's most widely used certification scheme for enterprises seeking to document their environmental efforts and demonstrate social responsibility.
- More than 4800 approved enterprises as per 29.09.15



Co-funded by the Intelligent Energy Europe  
Programme of the European Union

Beyond Energy Action Strategies  
 **BEAST**

# Eco-lighthouse

- Eco-lighthouse ensures systematic approach to environmental initiatives in everyday life.
- The businesses meet various industry requirements and implementing measures for a more environmentally friendly operation and good working conditions.



Co-funded by the Intelligent Energy Europe  
Programme of the European Union

# Eco-lighthouse

As an Eco-Lighthouse many enterprises will achieve



- a better work environment
- a more environmentally friendly organisation
- a proud and more environmentally conscious staff
- a better reputation
- more satisfied customers
- greater opportunities to succeed when tendering bids



# Eco-lighthouse

The Eco-Lighthouse scheme is based on a set of general requirements, the General Industry Criteria, which apply to enterprises in all industries, and over 70 sets of criteria applicable to specific industries. Industries are classified according to the Norwegian Standard Industrial Classification (SIC2007).

- [General Industry Criteria \(PDF\)](#)
- [ICT Use/Supply \(PDF\)](#)
- [Green Events \(PDF\)](#)
- [Landlord – Commercial Building \(PDF\)](#)
- [Office-based Enterprises \(PDF\)](#)



# Eco-lighthouse



# Eco-lighthouse

- The certificate is awarded by an independent assessment
- The certificate is recognized by the authorities.
- We call it taking environmental responsibility into practice!



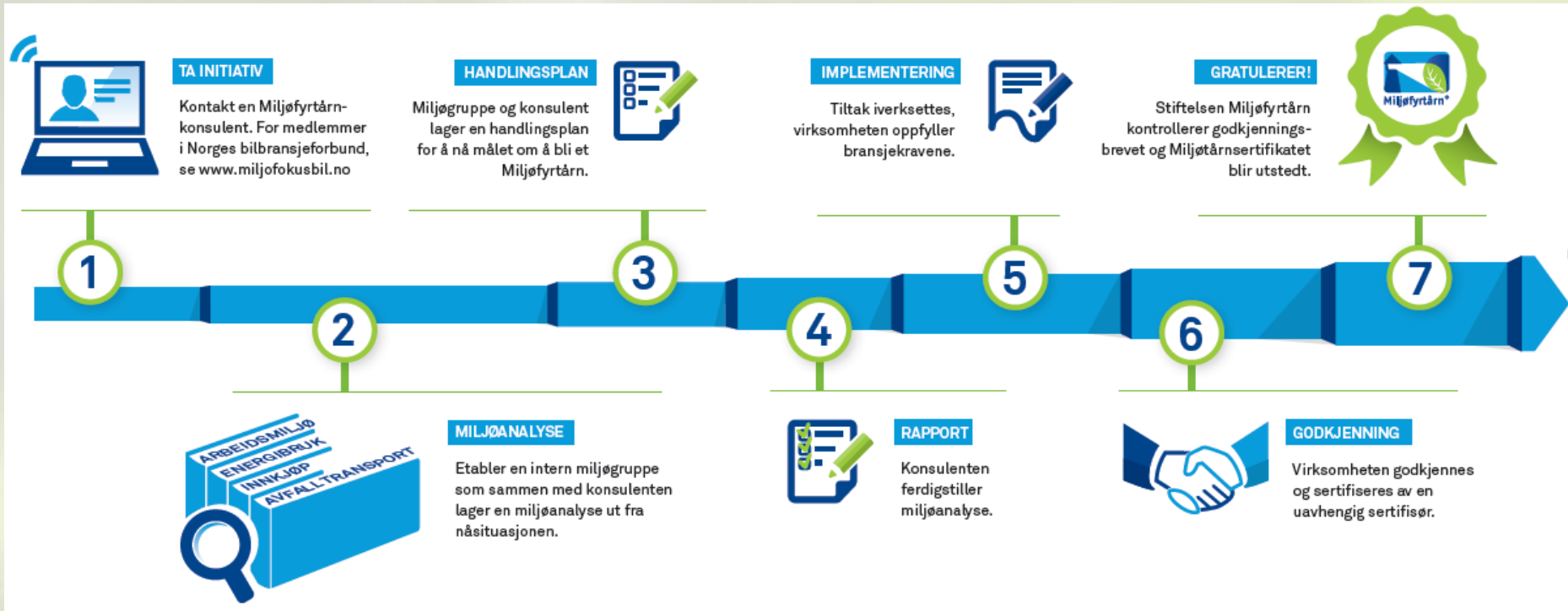
# Areas of focus

- System criteria
- Work environment
- Procurements
- Energy
- Transport
- Waste
- Discharges into water





# Process to be Eco-lighthouse



# Head Office Model

- Relevant for large chains and corporate groups.
- The main purpose of this model is to get the highest quality Eco-Lighthouse dividends possible throughout the entire enterprise.



# Eco-lighthouse in Møre and Romsdal

- “GREEN-STATE” movement in 2005
- County’s administration certified in 2006
- It was politically decided in 2008 that all the subordinate units (37 dental clinics and 23 higher secondary schools) and the County Authority shall be certified Eco-lighthouse at all times
- Status as per 2015: 18 higher secondary schools and 30 dental clinics are certified



# Criteria: Energy

- 23 § -Energy Labelling of Buildings
- 24 - Buildings measuring less than 1000 m2 must complete the energy efficiency checklist
- 1692- Energy efficiency measures which an enterprise can implement on its own initiative and whose costs can be recouped within two years must be implemented



# Criteria: Energy

- 21- Internal procedures must ensure low energy consumption for heating, ventilation, lighting and production.
- 22- Energy consumption must be registered every month. Energy consumption must be reported in the annual environmental report.



# Energy usage

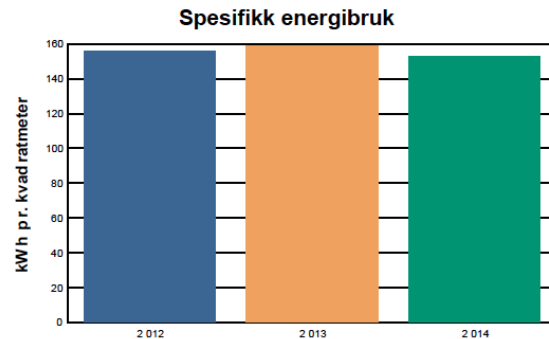
Møre og Romsdal Fylkeskommune - sentraladministr.

Miljørapport

2014

## Energi

År	Total energibruk	Areal (m <sup>2</sup> )	Spesifikk energibruk	Energibruk pr årsverk
2012	1 110 345 kWh	7106	156 kWh/m <sup>2</sup>	4 127,7 kWh
2013	1 243 750 kWh	7841	159 kWh/m <sup>2</sup>	4 783,7 kWh
2014	1 226 229 kWh	8026	153 kWh/m <sup>2</sup>	4 626,2 kWh



Energimerke på bygget: E

Oppvarmingskarakter: rød

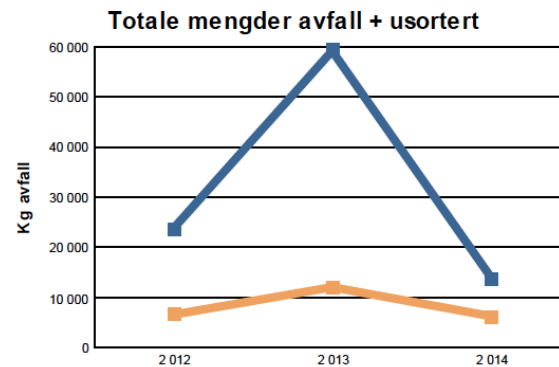
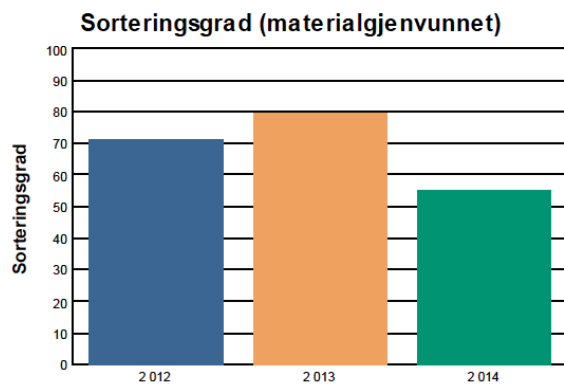


Co-funded by the Intelligent Energy Europe  
Programme of the European Union

# Waste management

## Avfall

År	Sum Sortert (kg)	Sum Usortert (kg)	Total mengde avfall (kg)	Kildesorteringsgrad	Kilo restavfall pr årsverk	Omsetning pr kg restavfall
2012	16874	6801	23675	71 %	25,28 kg	26 172 kr/kg
2013	47151	12059	59210	80 %	46,38 kg	15 724 kr/kg
2014	7528	6119	13647	55 %	23,09 kg	33 108 kr/kg



Blå linje = totale mengder avfall (i kg)  
Oransje linje = sum usortert avfall (i kg)

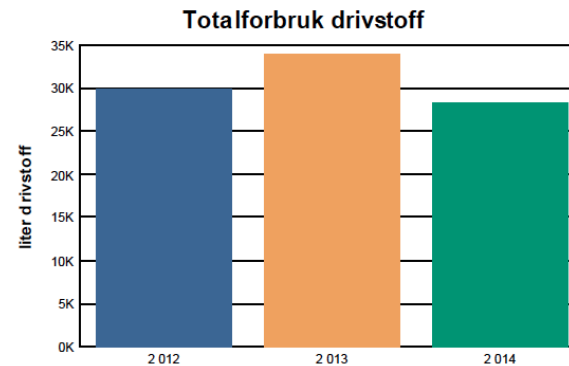


# Transport

År	Antall flytimer	Antall flyreiser	Totalforbruk drivstoff (liter)	Drivstoff-t ype	Antall kjøretøy	Totalt antall km.	Antall video/-webmøter
2012		2153	16 918	Bensin	0	439 428	308
			12 963	Diesel			
2013		1296	19 206	Bensin	0	498 846	375
			14 716	Diesel			
2014		1083	15 977	Bensin	0	414 993	365
			12 242	Diesel			

Kommentarer:

*NB! F.o.m. 2012-rapporten er registrering av flyreiser endret fra antall flytimer til antall flyreiser. Antall flyreiser rapporteres inn i 3 kategorier, i utrapporten vises kun samlet antall. Se klimakalkulatoren for å se fordelingen av flyreiser på de ulike kategoriene, og hvilke utslag dette får i CO2-utslipp.*



Co-funded by the Intelligent Energy Europe  
Programme of the European Union





Co-funded by the Intelligent Energy Europe  
Programme of the European Union

Beyond Energy Action Strategies



Stephen Oommen  
Environmental advisor  
County Authority of Møre and Romsdal  
Molde, Norway

email: [stephen.oommen@mrfylke.no](mailto:stephen.oommen@mrfylke.no)

Skype id: oommen.stephen

Phone: + 47 46 27 62 73/ 71 25 86 05



Co-funded by the Intelligent Energy Europe  
Programme of the European Union

Beyond Energy Action Strategies  
 **BEAST**